

236,771  
*Population*

32.8  
*Median Age*  
AZ: 36.7 | U.S. 37.9

\$84,090  
*Median Household Income*  
AZ: \$49,762 | U.S. \$53,217

40.7%  
*Bachelors Degree or Higher (Age 25+)*  
AZ: 27.6% | U.S. 30.0%

3.02  
*Average Household Size*

*\*Source: ESRI 2015*

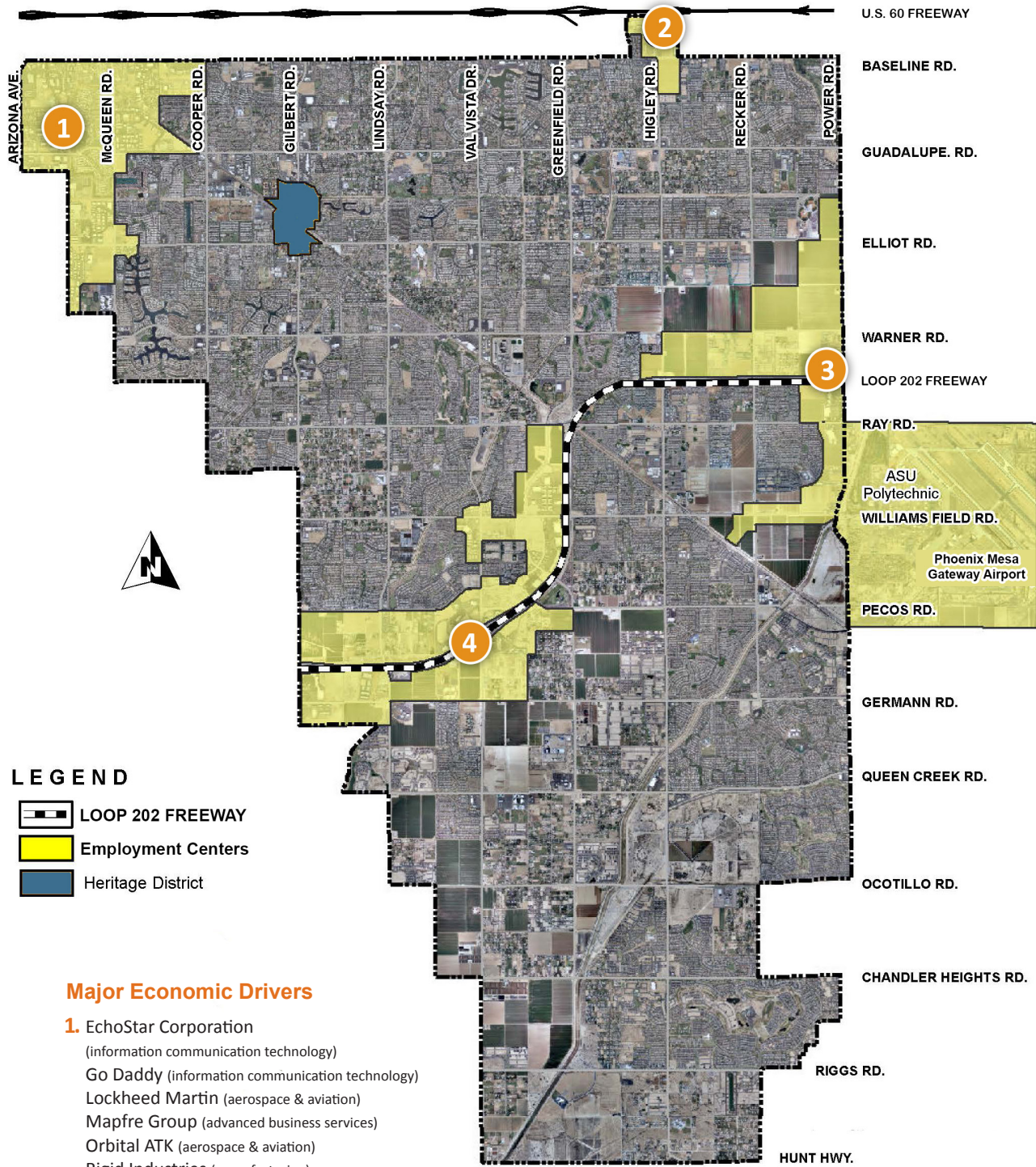
### Location

- Access to a workforce of **1 million individuals within a 30 minute commute**
- 12 miles southwest of Phoenix Sky Harbor Airport
- 8 miles from Interstate 10
- Direct access to U.S. 60 and Loop 202 Freeway

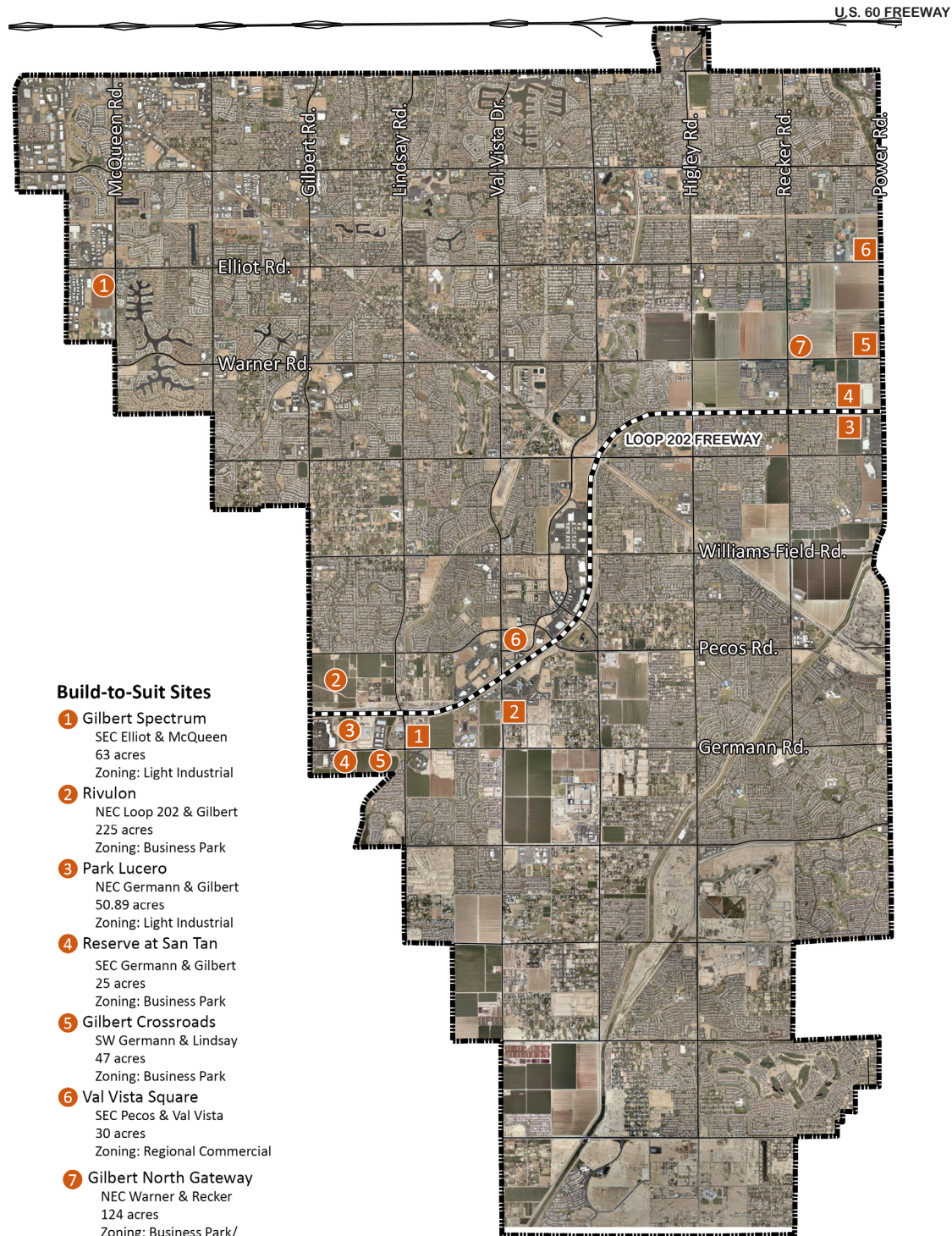
### Ratings & Rankings

- Top 10 Thriving City in the U.S.
- 20th Best Place to Live in America
- 4th Best Community for Hispanic Entrepreneurs
- 3rd Best City to Find a Job in the U.S.
- The #1 City in the Nation for Working Parents
- 16th in the Nation for First-Time Home Buyers
- 2nd Safest City in the U.S.

## Employment Centers



## Developer Ready Sites

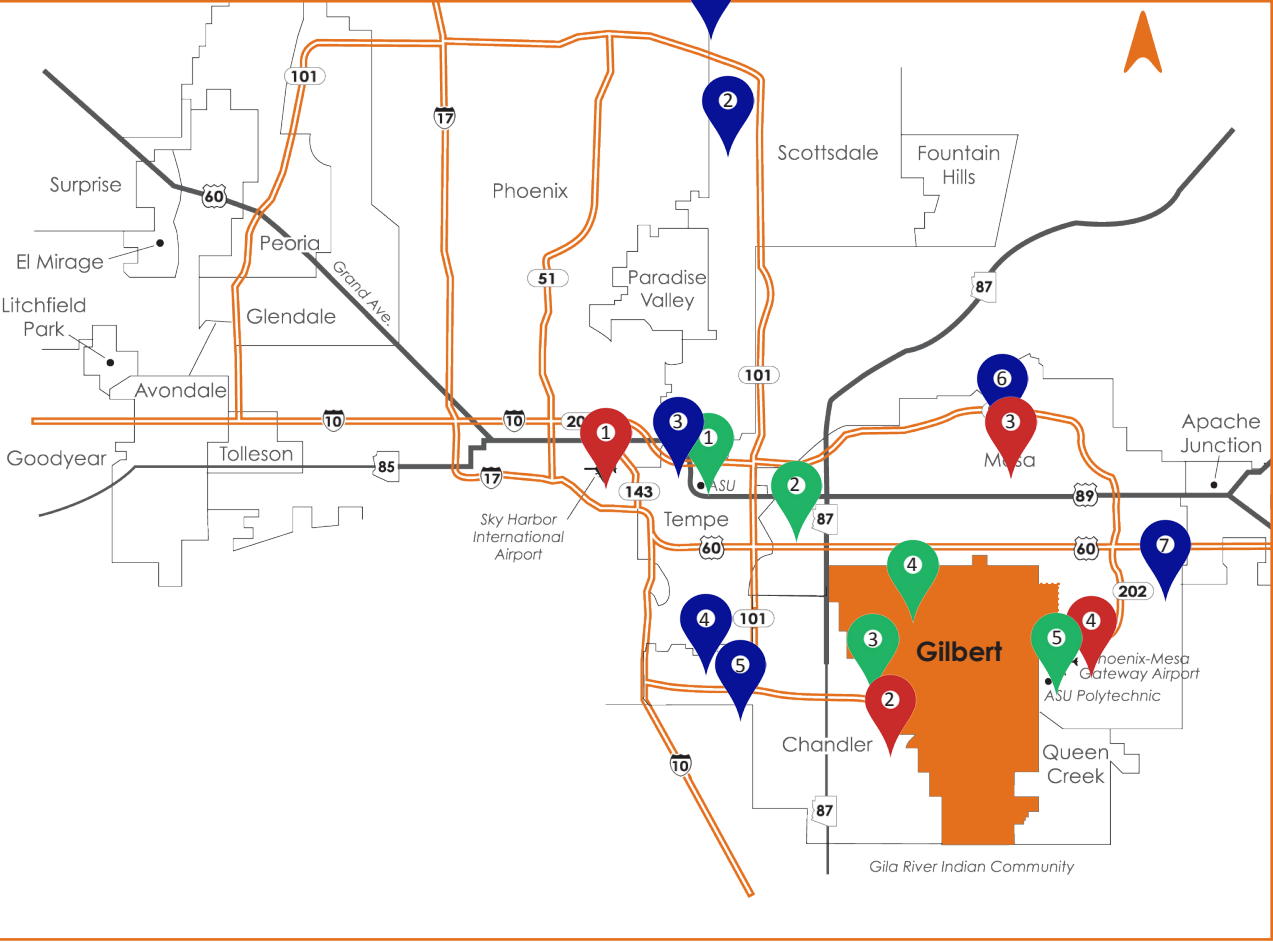


### Developer Ready Sites

- |  |   |
|--|---|
| 1 NEC Lindsay & Germann<br>95 acres<br>Zoning: Business Park   | 4 NWC Loop 202 & Power<br>32.6 acres<br>Zoning: Light Industrial            |
| 2 SEC Mercy & Val Vista<br>15 acres<br>Zoning: Business Park   | 5 NWC Warner & Power<br>320 acres<br>Zoning: Business Park/Light Industrial |
| 3 SWC Loop 202 & Power<br>30 acres<br>Zoning: Light Industrial | 6 NWC Elliot & Power<br>37.5 acres<br>Zoning: Business Park                 |



## Phoenix East Valley



## Higher Education Institutions

- 1 Arizona State University  
Tempe Campus
- 2 Mesa Community College
- 3 Chandler-Gilbert  
Community College
- 4 Saint Xavier University  
Opening Fall 2015
- 5 Arizona State University  
Polytechnic Campus

## Airports

- 1 Phoenix Sky Harbor International Airport
- 2 Chandler Municipal Airport
- 3 Falcon Field Airport
- 4 Phoenix Mesa Gateway Airport

## Notable East Valley Employers

- 1 Henkel Consumer Goods Inc.
- 2 GoDaddy Headquarters
- 3 State Farm Regional Headquarters (Under Construction)
- 4 Intel
- 5 PayPal
- 6 Boeing
- 7 Apple

## Notes

[illegible]